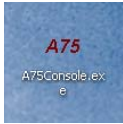
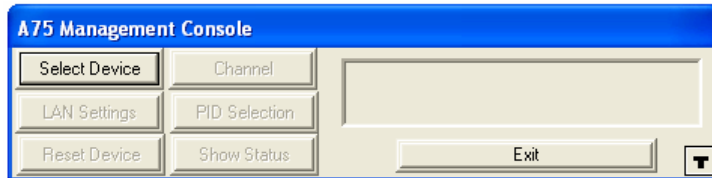


How to tune-in the correct WPT TV channel on your laptop.

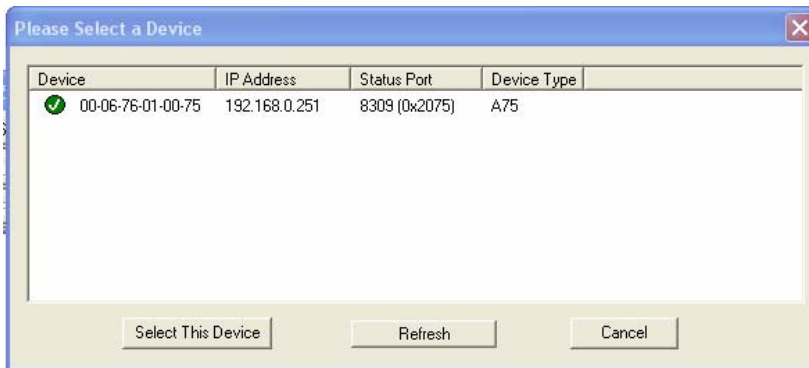
Double click the A75 icon.



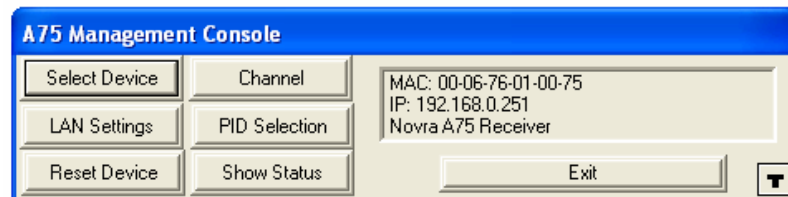
Click the “Select Device” button.



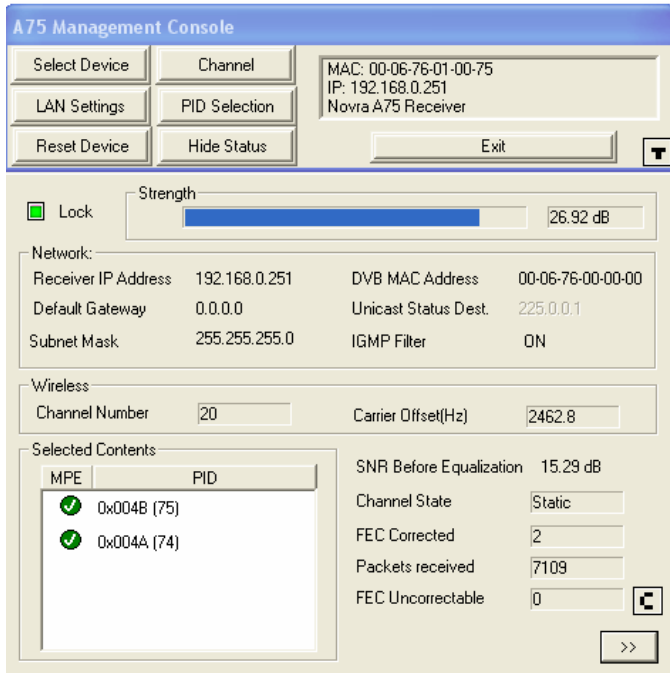
Highlight or click on the check mark.
Then click the “Select This Device” button.



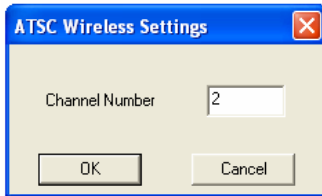
Select “Show Status” button to see the expanded screen.



Click the “Channel” button.



Based on the chart information below, enter the “Channel Number” for your area.



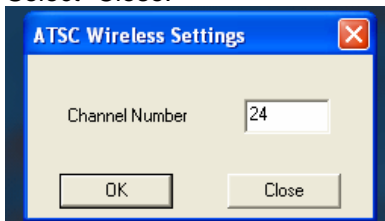
ECB DTV Channels				
Call Sign	Ch	Lower Frequency	City	Point Antenna Towards
WHA-DT	20	506 MHz	Madison	West Towne Mall
WPNE-DT	42	638 MHz	Green Bay	County Highway X in De Pere. Aim towards Scrays Hill.
WHRM-DT	24	530 MHz	Wausau	Top of Rib Mountain
WLEF-DT	47	668 MHz	Park Falls	Due east of Park Falls 9.3 miles on state highway 182. 45-56-43 Latitude.90-16-28 Longitude.
WHLA-DT	30	566 MHz	La Crescent, MN	West side of the Mississippi River next to La Crescent, MN
WHWC-DT	27	548 MHz	Menomonie	2.3 miles NE of Wheeler

Far Northeastern Corner of Wisconsin*				
*DatacastWisconsin datacast service is not currently available in this coverage area.				
WDSE-DT	38	617 MHz	Duluth/Superior, Minnesota	46.791667Latitude 92.12246 Longitude. Top of the ridge on the west side of Duluth, MN.
Milwaukee Area*				
*DatacastWisconsin datacast service is not currently available in this coverage area.				
WMVS-DT	8	183 MHz	Milwaukee	Northeast Milwaukee, just on the border of Shorewood. 1 mile West of WITI 6 tower.
WMVT-DT	35	599 MHz	Milwaukee	Northeast Milwaukee, just on the border of Shorewood. 1 mile West of WITI 6 tower. .

Select OK.

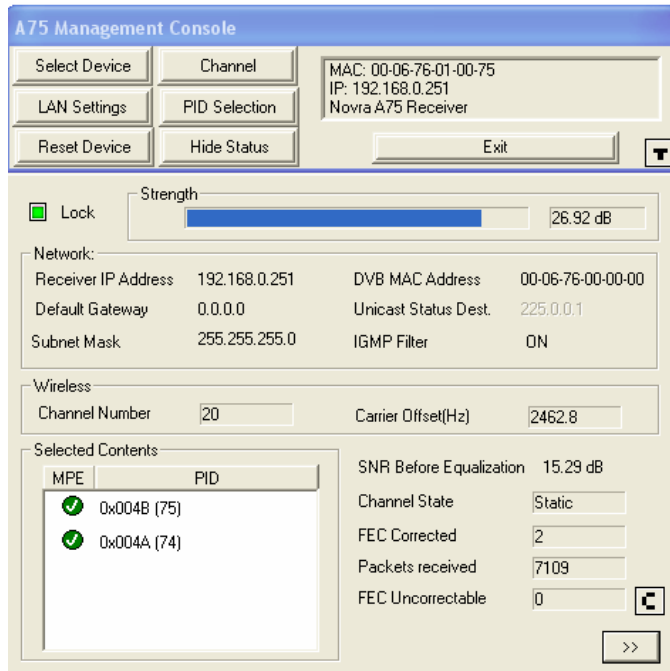


Select "Close."



The “Lock” indicator turns green if the signal “Strength” is valid.

Signal “Strength” should read above 16 dB and the numerical count for “FEC Uncorrectable” should remain low.



Click “Exit” button to close A75 Management Console application.

Questions? E-mail Tina Hauser at hauser@wpt.org or telephone 608-262-6756.