



## **DatacastWisconsin Technical Service Bulletin:**

# **Configuring Triveni DataReceiver Catalog Viewer to Start Automatically upon Windows Log In**

(03/25/2007)

**Background:** A datacast receiver requires two software applications to run at all times: BBTI Server4PC and Triveni Digital DataReceiver Catalog Viewer.

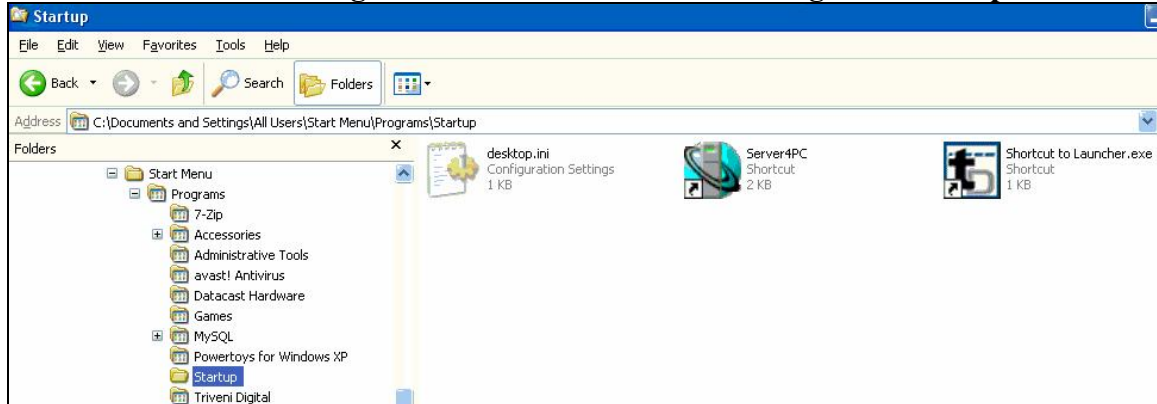
When a user logs in to Microsoft Windows, the BBTI software is programmed to automatically start up and run in the background as a “service” without any user intervention.

The Triveni Catalog Viewer does not start automatically. A user must open the Triveni Digital DataReceiver Catalog Viewer by selecting the application in the Windows Start Menu. *After* being launched, the Triveni Catalog Viewer will start receiving data automatically. Datacast content will not be received if the Triveni Catalog Viewer is not open and running. The Triveni Catalog Viewer must be left open and running at all times in order to receive datacast files completely. If a user wishes to use their datacast receive computer as a workstation, the Triveni Catalog Viewer may be minimized for user convenience, but it must be left open and running.

For users who would prefer not to have to manually open the Triveni Catalog Viewer each time they restart their computer and log in to Windows, it is possible to configure Windows so that the Triveni Catalog Viewer opens automatically when a user logs in to Windows.

1. On the datacast receive computer, log in to Microsoft Windows as an **Administrator**.
2. Open Microsoft Windows **Explorer**.
3. Navigate to **C:\Program Files\Triveni Digital\SkyScraper DataReceiver**
4. Click the + to expand the SkyScraper DataReceiver folder
5. Right click on the **Launcher.exe** file
6. Select **Send to →** and then select **Desktop (create Shortcut)**
7. Navigate to **C:\Documents and Settings\Administrator\Start Menu\Programs\Startup**
8. Click on Desktop

- Cut and Paste, copy, or drag and drop the **Shortcut to Launcher.exe tD icon** to **C:\Documents and Settings\Administrator\Start Menu\Programs\Startup**



- Depending on how the Windows accounts\* are configured on your datacast receiver, it may be necessary to repeat the above step for the All Users account by pasting the **Shortcut to Launcher.exe tD icon** in **C:\Documents and Settings\All Users\Start Menu\Programs\Startup**

\*If you experience an initialization error for a User level account, please refer to the Installation Instructions for advice.

- Log off of Windows
- Log back in to Windows.
- After Windows has had a few minutes to load the start up services and applications, you should see the Triveni Digital Catalog Viewer open and running.