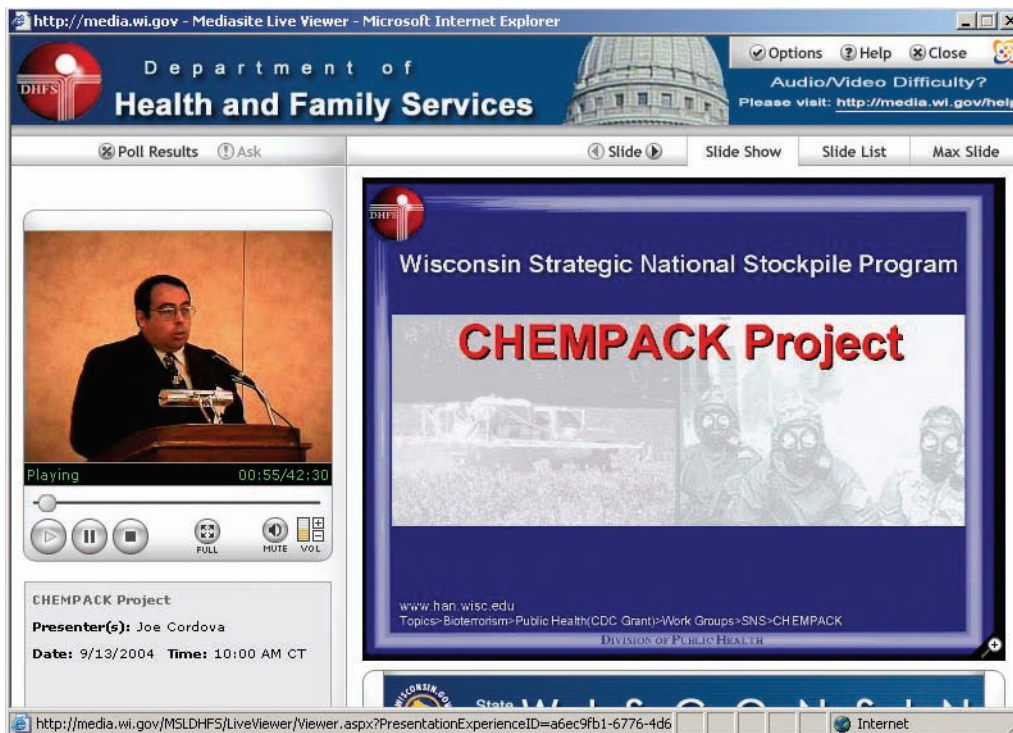


Datacasting Projects

Department of Health and Family Services Datacasting Pilot

(2005)



In the first phase of this project, pre-packaged DHFS multimedia video conferences containing health information (see graphic on left) were datacast to six test receive sites around Wisconsin.

The second phase of this project will involve several new tests. High-resolution video will be sent to the six receive sites, with possible content including a DHFS training video related to mass vaccination clinics. We will also compare internet and datacasting delivery by sending identical content over both systems. In addition, DHFS will be allowed to send content directly to the datacasting server. Finally, in a mock-emergency scenario, DHFS will send live video containing emergency information to a streaming server and directly to the datacast broadcast stream in real time.

UWEX/UW Colleges Distance Education Datacasting Project (2005 – 2006)

Course Schedule Details – University of Wisconsin – Baraboo/Sauk County
http://baraboo.uwc.edu/academics/courses/schedules/details.asp?ID=30

UNIVERSITY OF WISCONSIN BARABOO/SAUK COUNTY
The best start for the life you want.

ACADEMICS

Course Schedule: SPRING 2006

Back To Menu

Course	Title	BREADTH	ID #	CR	SEC	Time	Day(s)	Room	Instructor	Final
2005-06 SPRING (Tentative)										
ANTROPOLOGY										
ANT 104	CULTURAL ANTHROPOLOGY	SS		3	LEC B001	3:30-4:45PM	TR	A153	STAFF	
ART										
ART 112	THREE-DIMENSIONAL DESIGN	AP		3	LEC B001	2:00-5:00PM	TR	B110	STAFF	
ART 201	INTRODUCTION TO LIFE DRAWING	AP		3	LEC B001	1:00-4:00PM	MW	B110	STAFF	
ART 202	INTERMEDIATE LIFE DRAWING	AP		3	LEC B001	1:00-4:00PM	MW	B110	STAFF	
ART 216	DIGITAL IMAGING AND DESIGN	AP		3	LEC B001	9:30-11:55AM	MW	B110	STAFF	

The purpose of this project is to model how UW students may elect datacast delivery of course materials as one of their options when they sign up for a class. In phase I of the project, course materials (video, audio, text) related to a non-profit management course will be datacast to UW Baraboo/Sauk County Continuing Education students. Students will use loaned laptops and antennas to receive the datacast signal.

In phase II of the project, video and text materials will be delivered to the laptops of Engineering Economics students via datacasting. In phase III, Spanish language course material will be datacast to computers housed at four UW campuses. The Spanish language students will be asked to use these computers to access the datacast content and download to their own computers, or burn to DVD.

Kencast - WiFi - ITFS Pilot Project (2005)

This ground-breaking test project will combine datacasting, ITFS spectrum, WiMax and WiFi into a system that will deliver to the Madison area public safety, homeland security, educational and health information to mobile and fixed handheld devices such as laptops and PDAs.

